



# Reward *Knows* Custom Homes

You often build bigger; you *always* build better. Your clients have the means and you have the methods to build the custom homes that match their dreams. Your custom home creations are works of art and craftsmanship. Nothing about them is average or mainstream. They are not simple cookie-cutter boxes; they are way outside any box.

That's why your custom homes should be built with Reward Wall Systems insulating concrete forms (ICFs). Your clients expect the best inside and outside, so why not the "guts" too? Exterior walls built with iForm®, Reward's patented ICF suite of products, are solid and safe, comfortable and "green." And they're appropriate for virtually any design or building challenge you and your clients can come up with.

To put it simply, you'll win awards with Reward.

## Better And Sooner

They're eager to move in, of course, and you're eager to hand them the keys. When you build their dream home with Reward ICFs, you'll finish the project sooner and with fewer sub-contractors. That's because you'll complete four building steps—exterior structure, insulation, vapor barrier and furring—all at the same time.

Sooner doesn't mean simple, however. The size and configuration options with Reward's iForm give you a design toolbox second to none. No matter what the design calls for, it'll be accomplished sooner and more completely with Reward.

And sooner means savings for you and a finished dream home for your clients.

## Better And Greener

Air quality, energy efficiency, strength and safety—these are the home-building issues of the day. You know it and your clients know it. With Reward you gain the unmatched durability of steel-reinforced, super-insulated concrete walls that create a superior airtight envelope to lock out mold, moisture and allergens, as well as outside noise. That improved air quality and temperature-control mean reduced energy usage and costs—as much as 50 to 80 percent lower. Reward ICF walls can withstand winds up to 200 mph; their fire safety ratings are the best in the industry.



*"Since the primary living and dining room exterior wall was curved to take in the panoramic vista and because insulation and acoustic qualities were important to the homeowners, Reward ICFs worked well for the exterior walls of the house."*

— Jon Dic  
Archazo Architects  
Santa Fe, NM



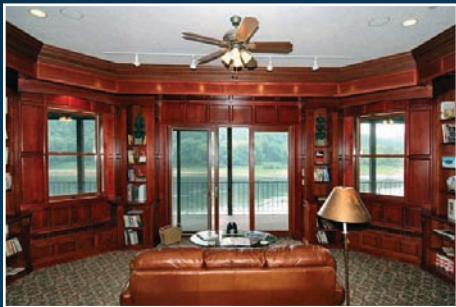
*"Although we chose ICFs for their energy efficiency, sound attenuation was a real bonus. We're located on the Hudson River with a railroad track located between us and the river, 100 feet from the house. Two major rail lines use the tracks, so we have many trains coming through each day. We can barely hear the trains on the near side, and can't hear them at all on the far side."*

— Bill Reilly  
Homeowner  
Hyde Park, NY



*“Obviously our biggest challenge was the steep hill where we were going to build.” “What had seemed to be an almost impossible challenge was actually relatively easy because of the use of iForm.”*

*– John Vogstrom  
Vogue Homes  
Inver Heights, MN*



*“I thoroughly researched every aspect of this house before I built it.” “I chose Reward, because they offered an eight-inch flat concrete wall, the quality of the form and the recessed plastic furring strips”.*

*– James Brumbaugh  
Homeowner  
Pittsburgh, PA*

You and your clients also know that green is good, and that green is here to stay. With Reward, there are no CFCs, HCFCs or formaldehyde used in the manufacture of the ICFs and all of the installation waste products are recyclable. Because Reward ICFs are manufactured in multiple plants nationwide, less fossil fuel is required to ship them to the job site. Plus, by using Reward ICFs you will significantly reduce the number of trees used. With Reward Wall Systems, it's easy to be green.

Your clients will delight in their new home as it becomes the talk of their neighborhood. You'll delight in the pleasure and pride you've brought into their lives. As for us at Reward, we'll just be happy we could help.

## Better For You

After more than 18 years and thousands of projects, Reward Wall Systems has seen—and done—it all. Our *Solid Support*<sup>SM</sup> passes that hands-on experience to you, from start to finish. We employ full-time architects, engineers and building experts to assist you whenever and however you need their expertise. We offer a wide array of technical materials and resources. We'll even walk you through the building and design code compliance and provide you with the on-site training or support you need to get your crew up and going. To us, *Solid Support* is simply part of our job.

Let us be your silent partner, helping you create residential masterpieces that will become industry showcases.

## Better For Your Business

Don't take it from us; talk to others. Reward can get you in touch with many custom home builders who have increased their sales and broadened their client base by creating homes that include Reward ICF products. These success stories will confirm once and for all that building with ICFs is an easy sale. The ongoing savings in a home built to last are simply too good to be ignored. As it should, value will close the deal.

As we all know, consumer interest in ICF construction is increasing. The time is right; the time is now. So get a jump on the competition and enhance your reputation by building the highest quality homes in your market. Call Reward today and learn more about the best ICF products and support in the industry.

See more at [www.rewardwalls.com](http://www.rewardwalls.com)

Or call us at **800-468-6344**

